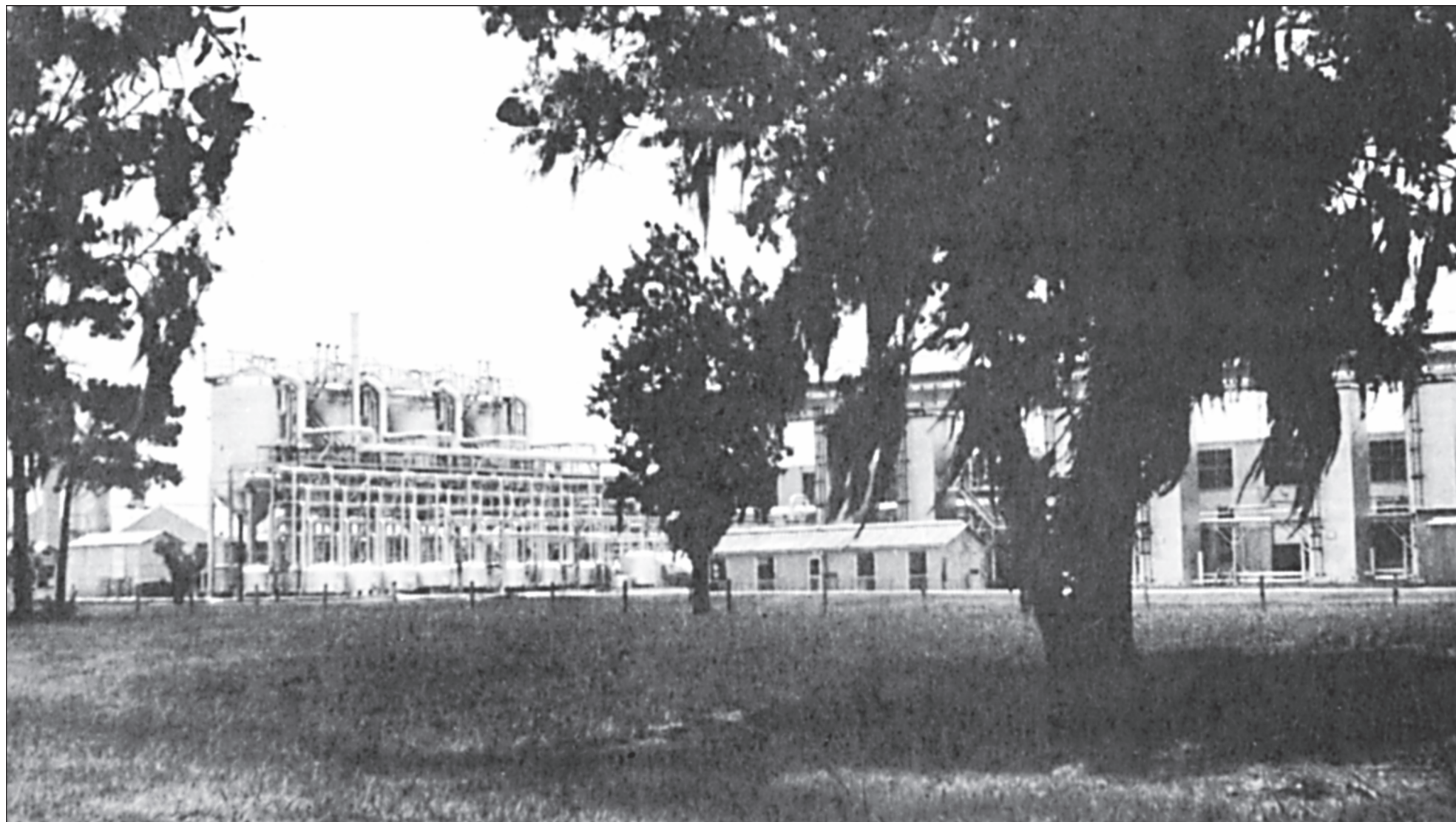
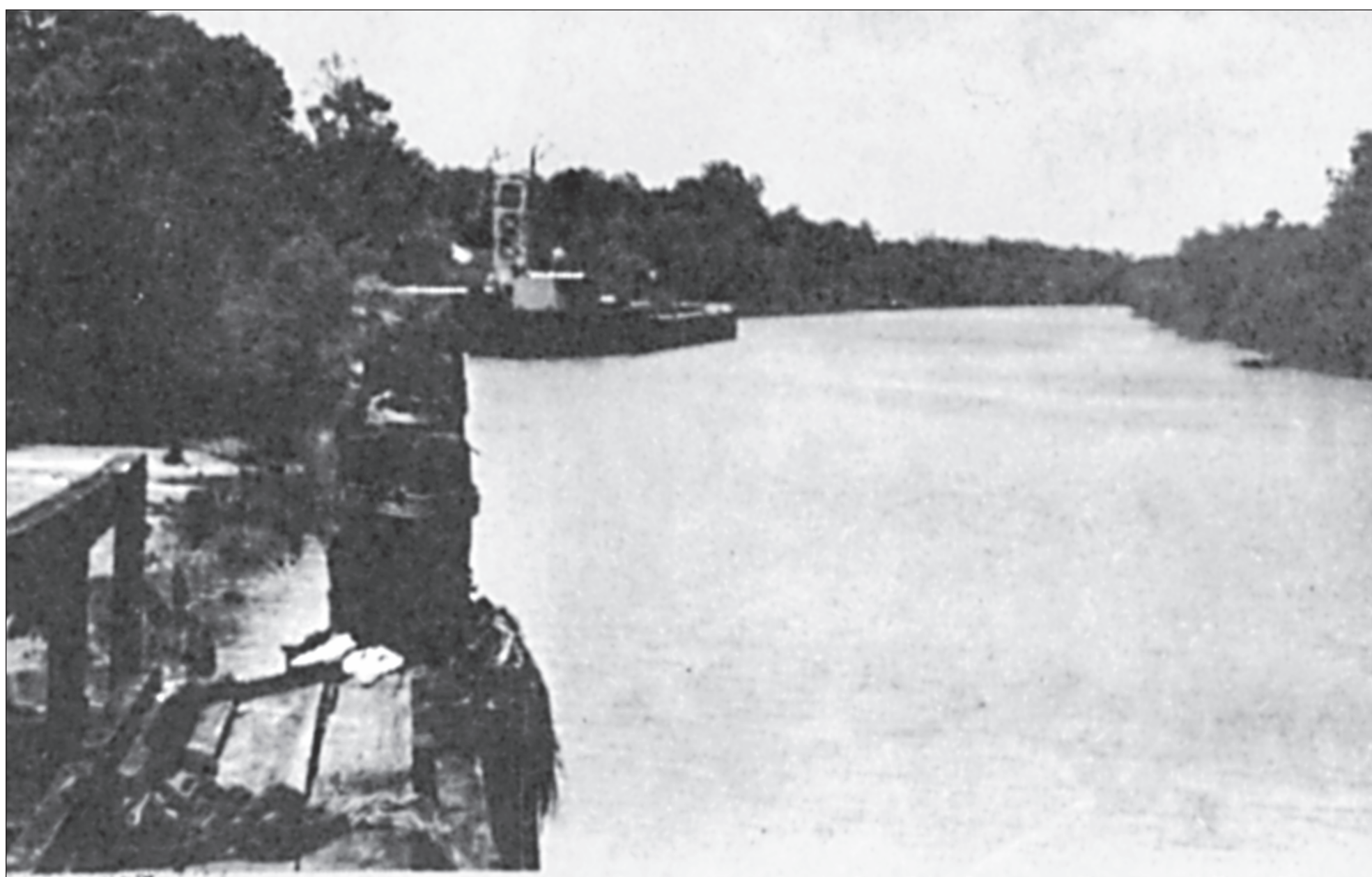


HISTORY & FOLKLORE

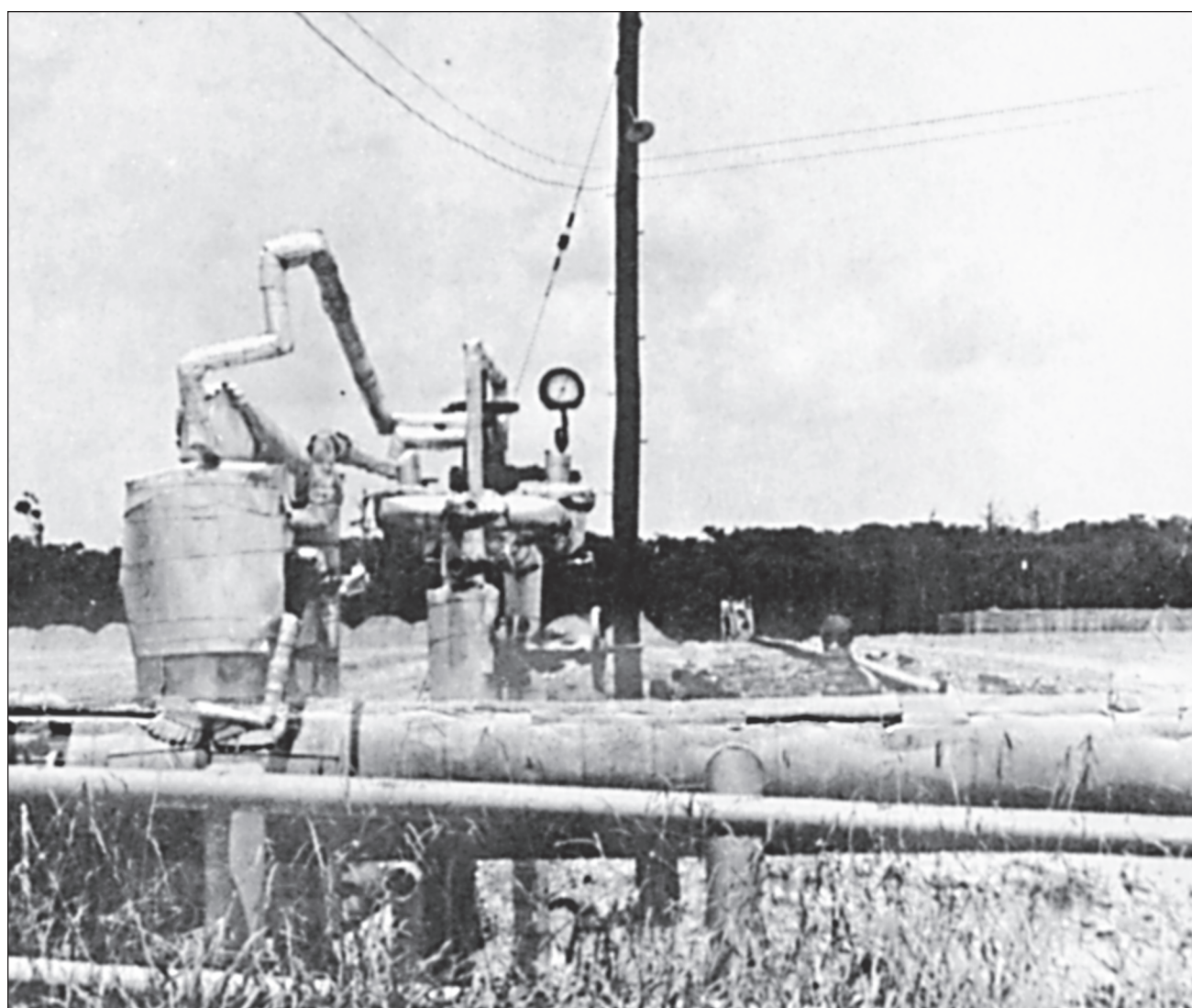


**From Illustrated Press of Liberty County, Thursday, August 1, 1963 –
A view of the main area of Texas Gulf Sulphur’s plant on the Wallisville Road.**



**From Illustrated Press of Liberty County, Thursday, August 1, 1963 –
Channel to the Trinity River, which covers a considerable distance between the plant and the river, provides access to the Gulf, the Intracoastal Canal, and thus the world, by water. At left is a pleasure boat in the turning basin or termination point of the channel. Above, barges tie up for loading. The ones that carry molten sulphur represent a considerable advance in the technology of sulphur production and transportation.**

– All photos this page by W.R. Johnson



**From Illustrated Press of Liberty County, Thursday, August 1, 1963 –
PIPES CARRY MOLTEN SULPHUR**
Sulphur is produced somewhat as is oil in this area, that is by drilling deep wells and pumping it out in molten state.



Dayton Electric Co., LLC
936-258-2502
daytonelectricco.com
 3053 FM 1960 • Dayton





RESIDENTIAL • COMMERCIAL • INDUSTRIAL
 Trained and certified HVAC service professionals
 Installation, maintenance and repair for residential
 and commercial generators.
 Exceptional service and quality workmanship
 TACLA 105689C - TA CLB 18821C - TECL 17934

Burial & Cremation services for all faiths

Military funerals
 Preplanning
 Monuments
 Grief Support



Serving the families of our community for over 80 years.



Pace-Stancil
 FUNERAL HOME AND CEMETERY

Family-Owned

Cleveland (281) 592-2641 303 E. Crockett Street Cleveland, TX 77327	Dayton (936) 258-5300 1304 N. Cleveland - Hwy. 321 Dayton, TX 77535	Coldspring (936) 653-2641 14250 Hwy 150 West Coldspring, TX 77331
--	--	--