

HISTORY & FOLKLORE



From Illustrated Press of Liberty County,
Thursday, December 16, 1965 –
Part of Liberty business section as it ap-
peared about the time of World War I.

A subscription to The Age, a monthly publication of
The Chambers County Museum, is only
\$18 per year. Mail your subscription fee to:
Chambers County Museum at Wallisville
P.O. Box 16
Wallisville, TX 77597

Burial & Cremation
services for all
faiths
Military funerals
Preplanning
Monuments
Grief Support



Serving the families of our community for over 80 years.



Pace-Stancil
FUNERAL HOME AND CEMETERY

Family-Owned

Cleveland (281) 592-2641 303 E. Crockett Street Cleveland, TX 77327	Dayton (936) 258-5300 1304 N. Cleveland - Hwy. 321 Dayton, TX 77535	Coldspring (936) 653-2641 14250 Hwy 150 West Coldspring, TX 77331
--	--	--



Insurance - Made Easy!

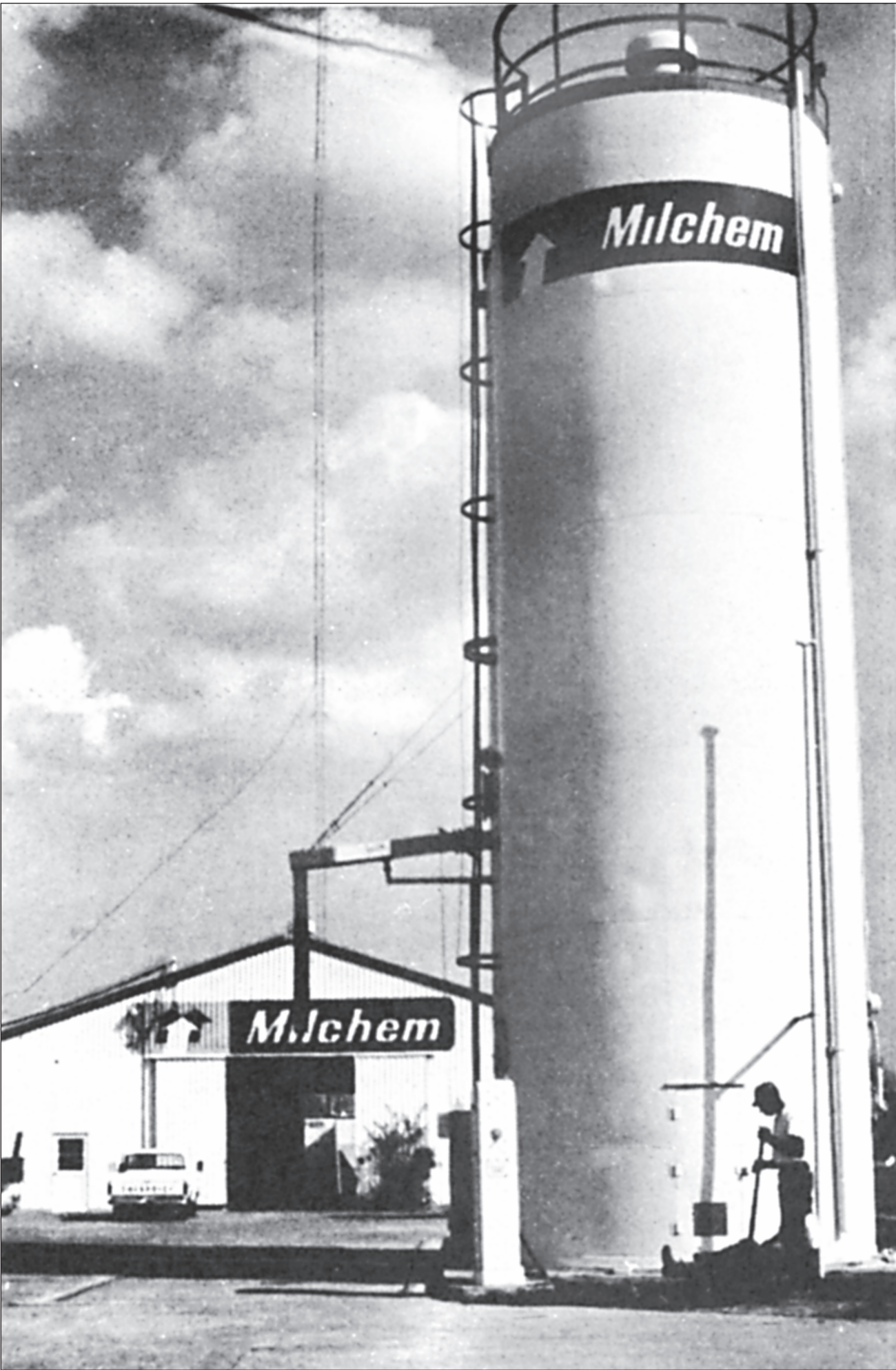
FLNB Insurance Agency provides a broad range of products. We can write for your home, auto, flood, recreational toys/items and commercial insurance.
Get the information you need from those who know.



Insurance Agency, Inc.

Phone 936-336-3641 • Fax: 936-336-9423
insurance@flnb.com • flnbinsurance.com
1900 Sam Houston • P.O. Box 4010 • Liberty

Liberty Gazette
936-336-6416



From Illustrated Press of Liberty County,
Thursday, March 26, 1970 –
Milchem was one of the earlier industrial facilities to locate in Dayton in the current surge of that area. Formerly known as Mil-white, it moved from Liberty several years ago. Recently an attractive Dayton facility was built by Schlumberger and is now occupied. The area is coming alive with the sound of bulldozers and steel construction. The billion dollar industrial expansion to the south in Chambers County is transforming the thought of businessmen hereabouts to scales unthought-of a decade ago.